

PEP Ergo Slab Props

High load-bearing capacity with low dead weight

Product Brochure – Edition 09/2017



Content

System advantages		Design tables	
4	High load-bearing capacity with low dead weight	12	PEP Ergo B
6	Load-bearing capacity far beyond the norm	14	PEP Ergo D
8	Quickly adjusted		PEP Ergo E
10	Simple connections		
11	Well-developed features for a long service life		

Edition 09/2017

Publisher

PERI GmbH
Formwork Scaffolding Engineering
Rudolf-Diesel-Strasse 19
89264 Weissenhorn
Germany
Phone +49 (0)7309.950-0
Fax +49 (0)7309.951-0
info@peri.de
www.peri.de

Components

16 PEP Ergo Components

Important information

All current safety regulations and guidelines applicable in those countries where our products are used must be observed.

The photos shown in this brochure feature construction sites in progress. For this reason, safety and anchor details in particular cannot always be considered as conclusive or final. These are subject to the risk assessment carried out by the contractor.

In addition, computer graphics are used which are to be understood as system representations. For ensuring a better understanding, these and the detailed illustrations shown have been partially

reduced to show certain aspects. The safety installations which have possibly not been shown in these detailed descriptions must nevertheless still be available. The systems or items shown might not be available in every country.

Safety instructions and load specifications are to be strictly observed at all times. Separate structural calculations are required for any deviations from the standard design data.

The information contained herein is subject to technical changes in the interests of progress. Errors and typographical mistakes reserved.



PERI
PEP Ergo E 400

PERI
PEP Ergo E 400

PERI
PEP Ergo E 400

PERI
PEP Ergo E 400

PERI
PEP Ergo E 400

PERI
PEP Ergo E 400

PERI
PEP Ergo E 400

PERI
PEP Ergo E 400

PERI
PEP Ergo E 400

PERI
PEP Ergo E 400

PEP Ergo Slab Props

High load-bearing capacity with low dead weight

PEP Ergo Props are mainly used for supporting slab formwork. Numerous practical features ensure fast and safe handling – this includes, for example, the Adjusting Nut indicating the direction or the ergonomic G-Hook which does not jam.

Galvanization guarantees a long service life. However, if a prop does get damaged during the tough everyday working operations on the jobsite, the inner and outer tubes can be replaced separately.

Load-bearing capacity far beyond the norm

Prop load up to 50 kN – with a comparatively low dead weight

Quickly adjusted

The 12 cm long adjustment range eliminates frequent re-positioning whilst the measuring scale on the inner tube accelerates length pre-adjustments

Simple connections

Prop heads can be attached to both the inner and outer tubes



Load-bearing capacity far beyond the norm

PERI PEP Ergo Props are characterized by a further increase in load-bearing capacity and numerous trend-setting detailed solutions with low dead weight.

The props have been developed in compliance with the Euro standard and approved by the DIBt (German Institute for Building Technology).

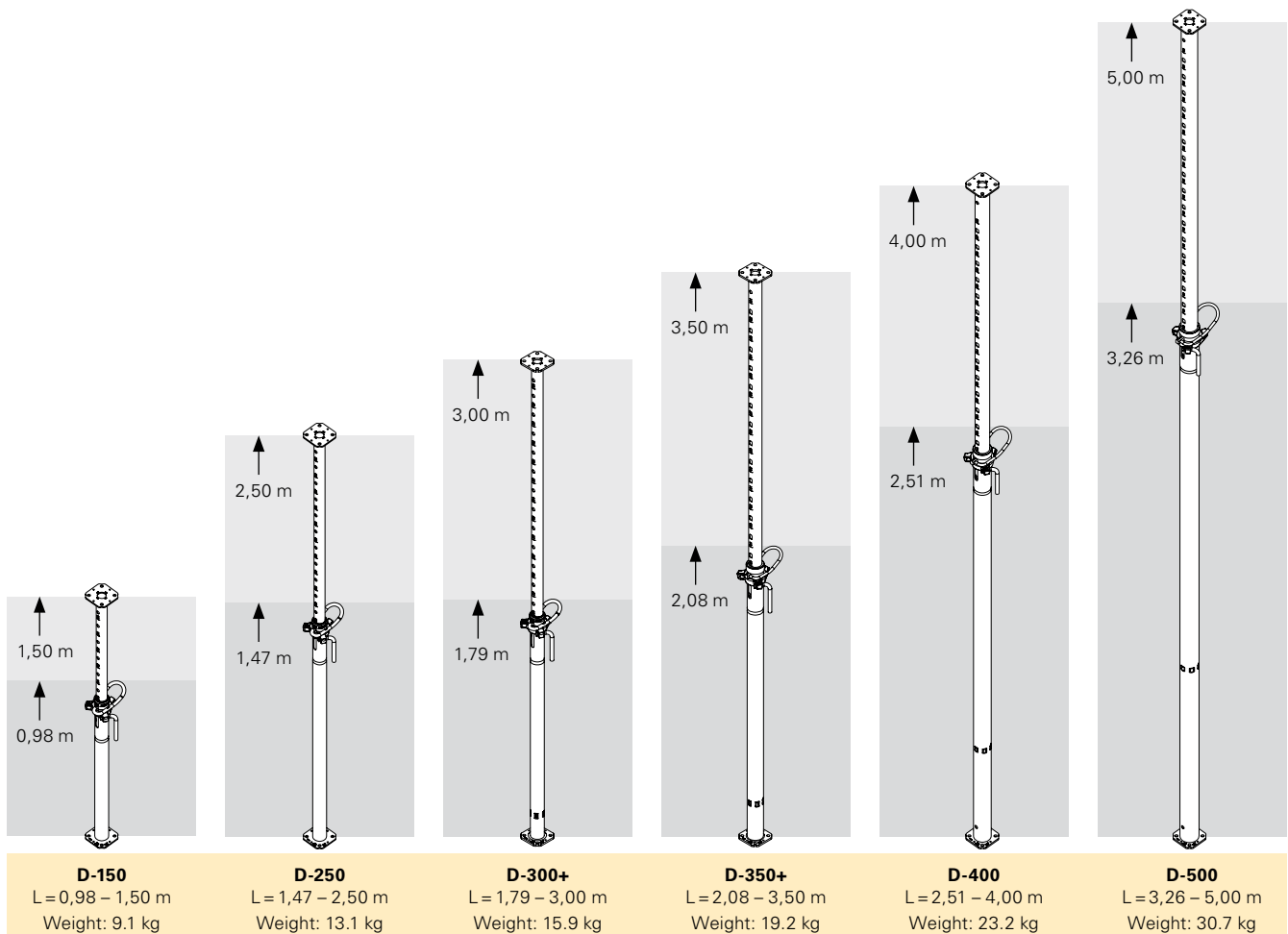
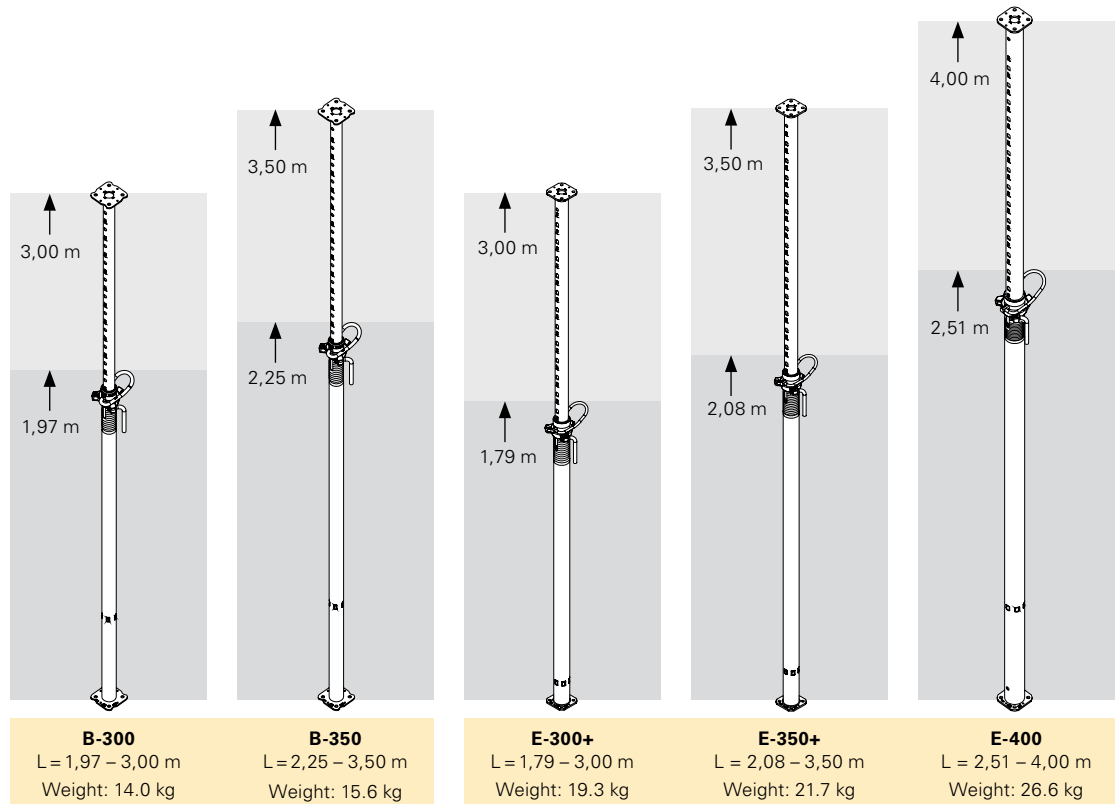
High load-bearing capacity = fewer props

The capacity factor – defined as the load-bearing capacity to prop weight ratio – can reach up to 70 % above the values of comparable slab props.

PERI PEP Ergo Props fully comply with Load Class B, D and E of EN 1065. The maximum load-bearing capacity is 50 kN.



The PEP Ergo B-300 weighs only 13.9 kg and carries a maximum of 30 kN.



Quickly adjusted

Fast forming

Due to the large adjustment range of 12 cm, the G-Hooks only seldom need to be re-positioned. In addition, the proven, integrated measuring scale in form of stamped numbers on the inner tube ensures efficient and error-free working on the construction site.

Safe forming

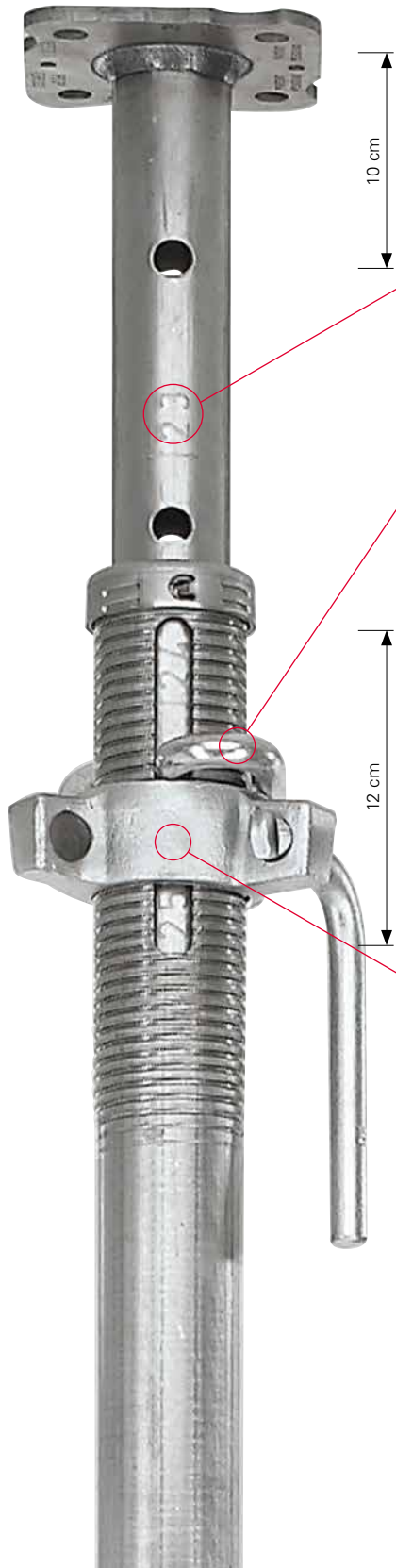
The integrated anti-crush feature with a safety clearance of 10 cm at the top end protects the user against injury. The integrated fail-safe device prevents the inner tube from unintentionally falling out.

Simple logistics

Robust, always visible and easily readable stamped indicia on the head and base plates ensure fast and safe identification of the stored props also within the stacking pallets.



The length stamping on the PEP Ergo Props is clearly readable.



Low risk of injury

The integrated 10 cm safety clearance protects against crushing injuries of the hand.

Stamped measuring scale

For fast prop adjustment. Stamped numbers on the inner tube show the overall length in dm, readable at the end of the outer tube.

Good handling

The patented G-Hook is ergonomically formed and can be securely clamped.

Generous adjustment range

The large adjustment range of 12 cm makes frequent adjustment unnecessary.

Three-winged nut

The high-quality, forged nut and the multi-start thread allows easy release also under full load.



New adjusting nut

The form of the lowering nut dictates the direction of lowering the load and ensures that lowering is carried out in a way protecting the material, also under maximum load.



The adjusting nut has a generously-sized hammer striking face and determines the impact direction.



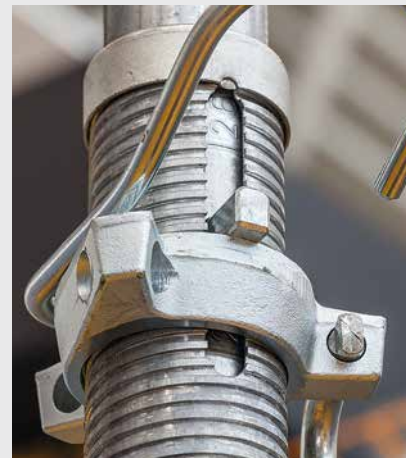
PEP Ergo Props can be easily adjusted with the help of the captive handgrip.

G-Hook

The shape of the patented G-Hook combines an extremely high load-bearing capacity with optimal functionality and minimum weight.



Strong support profile and optimized anti-dropout safeguard.



Level bearing surface of the adjusting nut for easy release.

Wingnut Spanner

The wingnut spanner allows effortless and silent loosening of the adjusting nut – even with maximum loaded props!



Ergonomic operations through offset wingnut spanner.

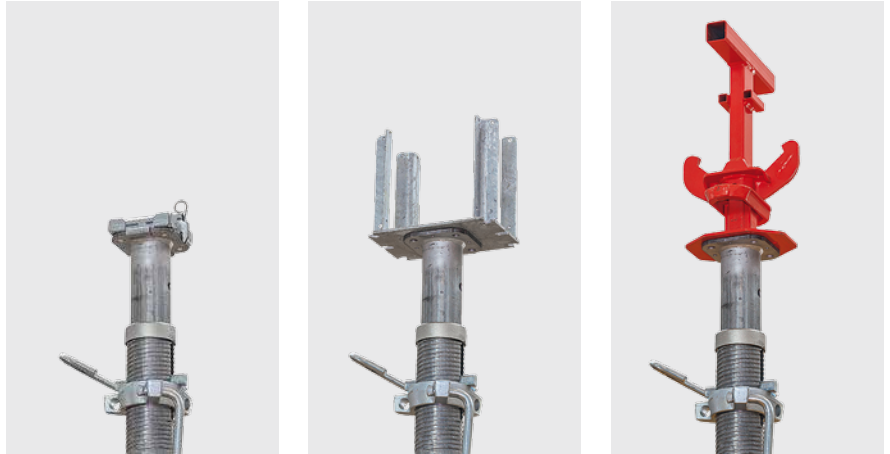


Safe operations due to hook on the wingnut spanner.

Simple connections

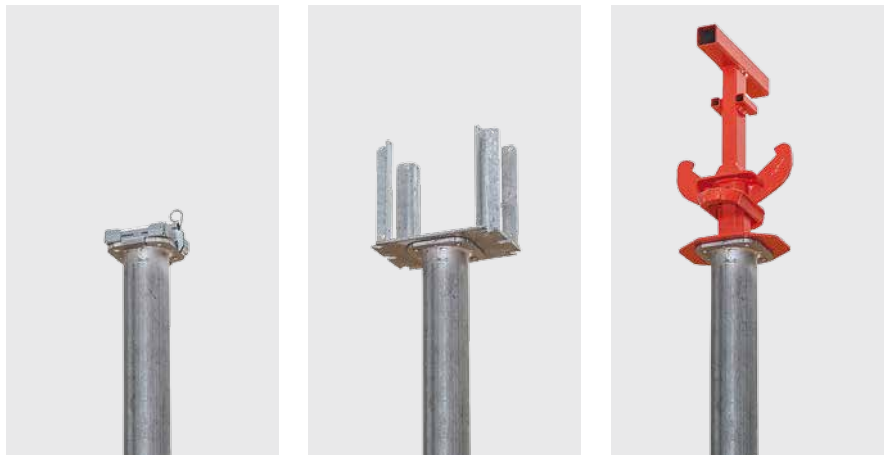
Assembly of accessories

Naturally, the use of all PERI Prop Heads is guaranteed. They are also usable on both sides through the identical end plates on the inner and outer tubes.



Assembly aids

The Universal Tripods and PEP Ergo as well as PEP Frames PRK are used as assembly aids.

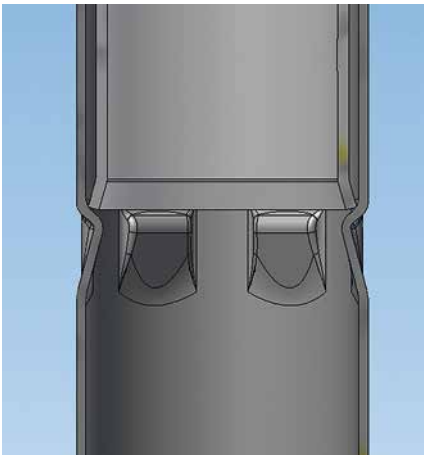


Well-developed features for a long service life



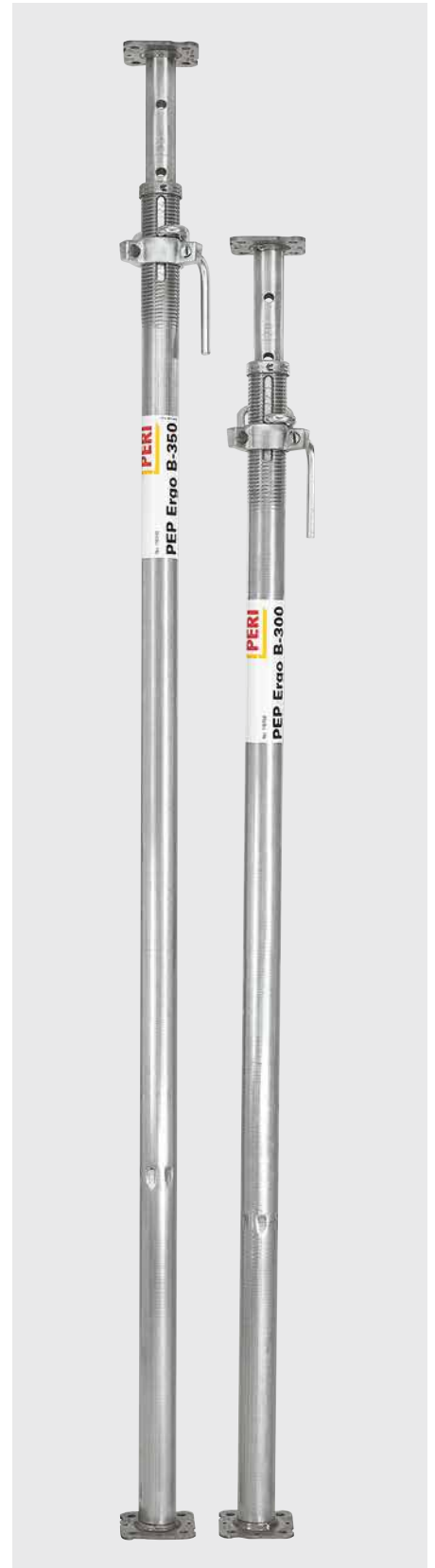
Long service life

The complete galvanisation of all surfaces guarantees a long service life. The new closing nut additionally provides a unique repair capability. It allows defective inner and outer tubes to be easily and separately replaced.



Site-optimized enhanced robustness

The inner tube ends well beyond the base plate itself. This ensures that any damage to the outer tube does not hinder the free movement of the inner tube.



Slab Props

PEP Ergo B

Permissible prop load [kN] according to approval

Extension length [m]	PEP Ergo B-300		PEP Ergo B-350	
	L = 1.97 – 3.00 m		L = 2.25 – 3.50 m	
	Outer tube bottom	Inner tube bottom	Outer tube bottom	Inner tube bottom
2.00	30.8	30.8		
2.10	29.8	30.8		
2.20	27.0	30.8		
2.30	24.6	30.8	30.8	28.6
2.40	23.0	30.8	28.6	28.6
2.50	21.5	30.8	25.5	28.6
2.60	20.3	29.5	23.1	28.4
2.70	19.3	27.5	21.3	28.0
2.80	18.3	24.8	19.8	27.4
2.90	16.9	22.3	18.6	26.1
3.00	15.6	20.2	17.5	24.4
3.10			16.3	22.8
3.20			15.2	20.8
3.30			14.3	19.0
3.40			13.2	17.4
3.50			12.4	15.7

Note:

- PERI PEP Ergo B-300 and PEP Ergo B-350 Props meet the load-bearing capacity requirements of Prop Class B as stipulated in DIN EN 1065.
- General Building Inspectorate Approval Z-8.311-934 issued by the German Institute for Building Technology (DIBt).

Slab Props

PEP Ergo D

Permissible prop load [kN] according to approval

Extension length [m]	PEP Ergo D-150		PEP Ergo D-250	
	L = 0.98 – 1.50 m		L = 1.47 – 2.50 m	
	Outer tube bottom	Inner tube bottom	Outer tube bottom	Inner tube bottom
1.00	30.8	30.8		
1.10	30.8	30.8		
1.20	30.8	30.8		
1.30	30.8	30.8		
1.40	28.5	30.8		
1.50	26.4	30.8	35.0	35.0
1.60			35.0	35.0
1.70			32.9	35.0
1.80			30.7	35.0
1.90			29.1	35.0
2.00			28.1	35.0
2.10			27.3	35.0
2.20			26.5	34.1
2.30			25.7	32.3
2.40			24.3	29.4
2.50			22.4	26.3
2.60				
2.70				
2.80				
2.90				
3.00				
3.10				
3.20				
3.30				
3.40				
3.50				
3.60				
3.70				
3.80				
3.90				
4.00				
4.10				
4.20				
4.30				
4.40				
4.50				
4.60				
4.70				
4.80				
4.90				
5.00				

Slab Props

PEP Ergo D

Permissible prop load [kN] according to approval

Extension length [m]	PEP Ergo D-300 +		PEP Ergo D-350 +		PEP Ergo D-400		PEP Ergo D-500	
	L = 1.79 – 3.00 m		L = 2.08 – 3.50 m		L = 2.51 – 4.00 m		L = 3.26 – 5.00 m	
	Outer tube bottom	Inner tube bottom	Outer tube bottom	Inner tube bottom	Outer tube bottom	Inner tube bottom	Outer tube bottom	Inner tube bottom
1.00								
1.10								
1.20								
1.30								
1.40								
1.50								
1.60								
1.70								
1.80	35.0	35.0						
1.90	35.0	35.0						
2.00	35.0	35.0						
2.10	35.0	35.0	40.0	40.0				
2.20	35.0	35.0	40.0	40.0				
2.30	33.4	35.0	40.0	40.0				
2.40	31.7	34.0	39.7	40.0				
2.50	30.1	32.7	36.9	40.0				
2.60	28.3	31.3	34.7	40.0	40.0	40.0		
2.70	26.2	29.1	32.9	40.0	40.0	40.0		
2.80	24.3	26.9	31.6	40.0	40.0	40.0		
2.90	22.4	24.9	30.3	40.0	40.0	40.0		
3.00	20.6	22.8	29.2	39.1	40.0	40.0		
3.10			27.2	35.4	37.7	40.0		
3.20			25.4	32.1	35.7	40.0		
3.30			23.7	29.4	33.9	40.0	40.0	40.0
3.40			22.1	27.0	32.5	40.0	40.0	40.0
3.50			20.7	24.7	31.0	39.7	40.0	40.0
3.60					29.0	36.4	40.0	40.0
3.70					27.0	33.3	40.0	40.0
3.80					25.2	30.7	40.0	40.0
3.90					23.5	28.2	40.0	40.0
4.00					21.8	26.0	40.0	40.0
4.10							39.3	40.0
4.20							36.5	40.0
4.30							34.0	39.2
4.40							31.8	37.0
4.50							29.9	34.6
4.60							28.1	32.4
4.70							26.4	30.4
4.80							24.8	28.5
4.90							23.4	26.8
5.00							21.8	25.3

Note:

- PERI PEP Ergo D-150, PEP Ergo D-250, PEP Ergo D-300 +, PEP Ergo D-350 +, PEP Ergo D-400 and PEP Ergo D-500 Props fulfil the Prop Class D load-bearing capacity requirements of DIN EN 1065.
- In addition, Prop PEP Ergo D-250 fulfils the Prop Class B requirements as stipulated in DIN EN 1065.
- General Building Inspectorate Approval Z-8.311-934 for PERI PEP Ergo D-150 and PEP Ergo D-250 and PEP Ergo D-300 +.
- General Building Inspectorate Approval Z-8.311-941 for PERI PEP Ergo D-350 +, PEP Ergo D-400 and PEP Ergo D-500.

Slab Props

PEP Ergo E

Permissible prop load [kN] according to approval

Extension length [m]	PEP Ergo E-300 +		PEP Ergo E-350 +		PEP Ergo E-400	
	L = 1.79 – 3.00 m		L = 2.08 – 3.50 m		L = 2.51 – 4.00 m	
	Outer tube bottom	Inner tube bottom	Outer tube bottom	Inner tube bottom	Outer tube bottom	Inner tube bottom
1.80	50.4	50.4				
1.90	50.4	50.4				
2.00	50.4	50.4				
2.10	50.4	50.4	50.4	50.4		
2.20	50.4	50.4	50.4	50.4		
2.30	50.4	50.4	50.4	50.4		
2.40	47.3	50.4	50.4	50.4		
2.50	45.6	50.4	50.4	50.4		
2.60	44.5	50.4	50.4	50.4	50.4	50.4
2.70	43.3	50.4	48.5	50.4	50.4	50.4
2.80	41.8	50.4	46.4	50.4	50.4	50.4
2.90	40.3	48.0	44.5	50.4	50.4	50.4
3.00	37.5	43.0	43.0	50.4	50.4	50.4
3.10			41.5	50.4	50.4	50.4
3.20			38.7	46.1	50.4	50.4
3.30			36.0	41.9	50.4	50.4
3.40			33.3	38.2	50.4	50.4
3.50			30.9	34.9	48.5	50.4
3.60					46.0	50.4
3.70					42.7	48.4
3.80					39.7	44.7
3.90					36.9	41.1
4.00					34.1	37.7

Note:

- PERI Props PERI PEP Ergo E-300 +, PEP Ergo E-350 + and PEP Ergo E-400 fulfil the Prop Class E load-bearing capacity requirements of DIN EN 1065.
- General Building Inspectorate Approval Z-8.311-941 of the German Institute for Building Technology (DIBt).



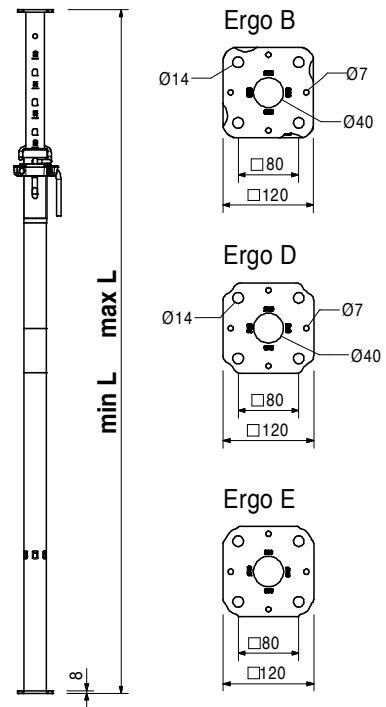
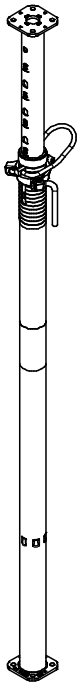
PEP Ergo Slab Props



Item no.	Weight kg		D	min. L	max. L
116780	14.000	Slab Props PEP Ergo			
		Slab Prop PEP Ergo B-300	Ø 60.6	1970	3000
116790	15.600	Slab Prop PEP Ergo B-350	Ø 60.6	2250	3500
117230	9.110	Slab Prop PEP Ergo D-150	Ø 60.6	980	1500
116770	13.100	Slab Prop PEP Ergo D-250	Ø 60.6	1470	2500
131360	15.900	Slab Prop PEP Ergo D-300 +	Ø 66.6	1790	3000
131111	19.200	Slab Prop PEP Ergo D-350 +	Ø 71.0	2080	3500
125140	22.900	Slab Prop PEP Ergo D-400	Ø 76.5	2510	4000
125150	30.400	Slab Prop PEP Ergo D-500	Ø 83.0	3260	5000
131104	19.300	Slab Prop PEP Ergo E-300 +	Ø 76.5	1790	3000
131085	21.700	Slab Prop PEP Ergo E-350 +	Ø 76.5	2080	3500
125170	26.600	Slab Prop PEP Ergo E-400	Ø 83.0	2510	4000

Slab prop made of steel.

Note
Permissible load: see PERI Design Tables.



PEP Ergo Slab Props

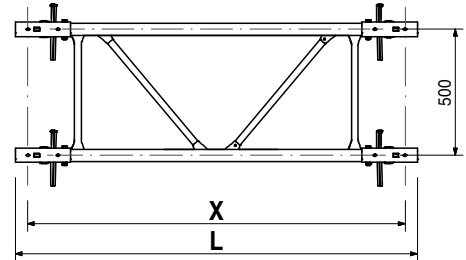
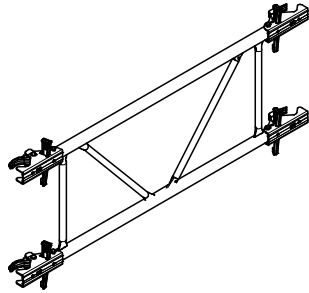
Item no.	Weight kg
111811	13.700
111812	13.900
112813	15.900
112814	17.800
111813	19.200
111814	20.100

PEP Frames PRK, Steel
PEP Frames PRK 62.5
PEP Frames PRK 75
PEP Frames PRK 100
PEP Frames PRK 120
PEP Frames PRK 137.5
PEP Frames PRK 150

Stiffening frame for PEP slab props. Complete with captive wedge coupling.

L	X
723	625
848	750
1098	1000
1298	1200
1473	1375
1598	1500

Note
 L = Loading Length
 X = Axis Length



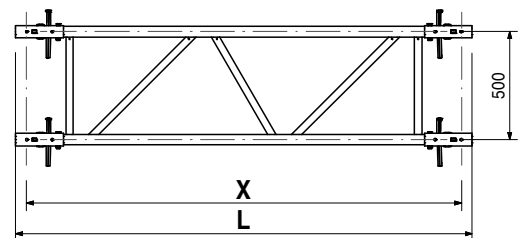
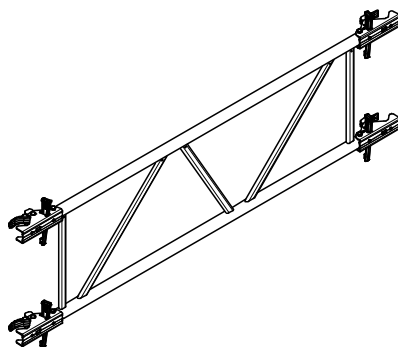
112718	15.300
111815	15.400
112788	15.600
111816	16.100
111817	16.300
111818	17.700
111819	18.700

PEP Frames PRK
PEP Frames PRK 200
PEP Frames PRK 201.5
PEP Frames PRK 210
PEP Frames PRK 225
PEP Frames PRK 230
PEP Frames PRK 266
PEP Frames PRK 296

Stiffening frame for PEP slab props. Complete with captive wedge coupling.

L	X
2098	2000
2113	2015
2198	2100
2348	2250
2398	2300
2758	2660
3058	2960

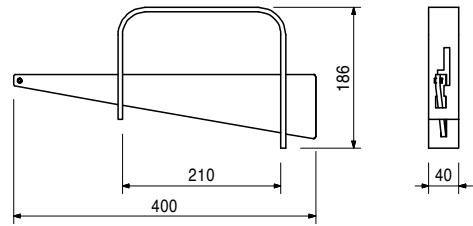
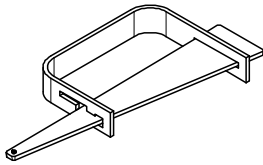
Note
 L = Loading Length
 X = Axis Length



Item no.	Weight kg
027940	1.840

Brace Clamp, galv., 48 – 76 mm

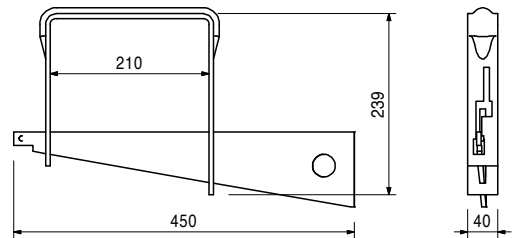
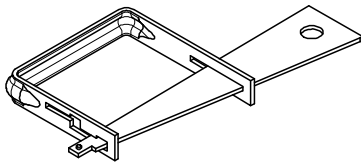
For assembly of 3 x 15 cm stiffening boards at slab props \varnothing 48 – 76 mm.



027790	2.460
--------	-------

Brace Clamp HL, galv., 76 – 120 mm

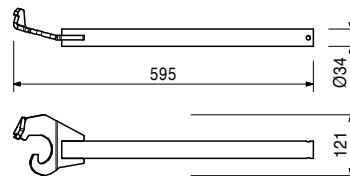
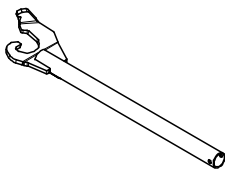
For assembly of 3 x 15 cm stiffening boards at slab props \varnothing 76 – 89 mm and 100 x 100 mm to 120 x 120 mm.



118345	1.500
--------	-------

Wing Nut Spanner PEP

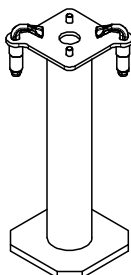
Allows effortless loosening of the adjusting nut with maximum loaded props.



027310	8.900
--------	-------

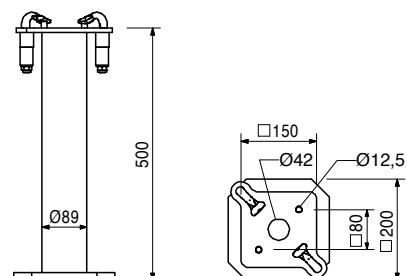
Base MP 50

For use with slab props with an end plate thickness of 6 – 10 mm. With clamped quick-release fastener.



Note

Permissible load: see PERI Design Tables.



PEP Ergo Slab Props

Item no.	Weight kg
103434	38.500
103429	45.300

Pallets RP-2, galv.
Pallet RP-2 80 x 120, galv.
Pallet RP-2 80 x 150, galv.

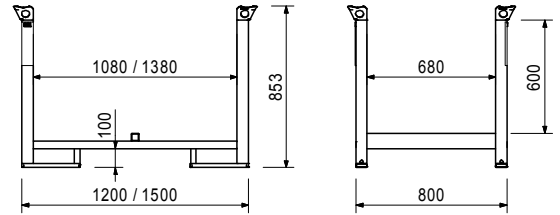
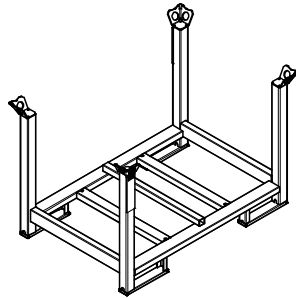
For stacking and transportation of formwork and scaffolding components.

Note

Follow Instructions for Use!

Technical Data

Permissible load-bearing capacity 1.5 t.



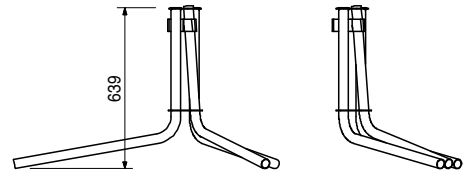
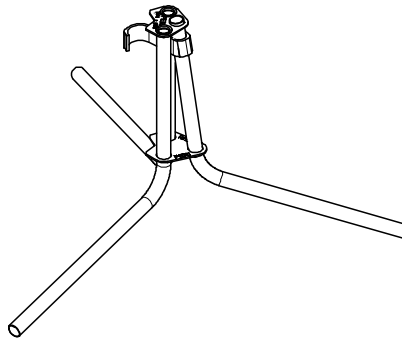
107152	5.810
--------	-------

Tripod PEP Ergo, galv.

Erection aid for PEP Ergo Slab Props with \varnothing 44 – 64 mm.

Note

Only use as erection aid!



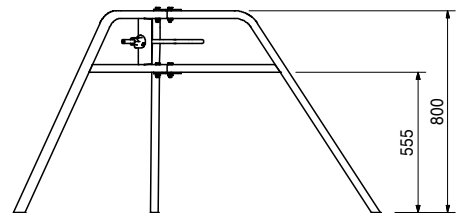
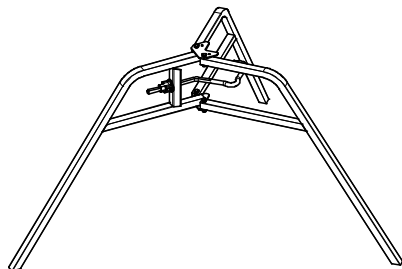
028000	9.190
--------	-------

Universal Tripod, galv.

Erection aid for slab props with \varnothing 57 – 120 mm and 120 x 120 mm. Can also be used in combination with MULTIPROP MP slab props and all slab props with Base MP 50.

Note

Only use as erection aid!



**The optimal System
for every Project and
every Requirement**



Wall Formwork



Column Formwork



Slab Formwork



Climbing Systems



Bridge Formwork



Tunnel Formwork



Shoring Systems



Construction Scaffold



Facade Scaffold



Industrial Scaffold



Access



Protection Scaffold



Safety Systems



System-Independent Accessories



Services



PERI GmbH
Formwork Scaffolding Engineering
 Rudolf-Diesel-Strasse 19
 89264 Weissenhorn
 Germany
 Tel. +49 (0) 7309.950-0
 Fax +49 (0) 7309.951-0
 info@peri.com
 www.peri.com